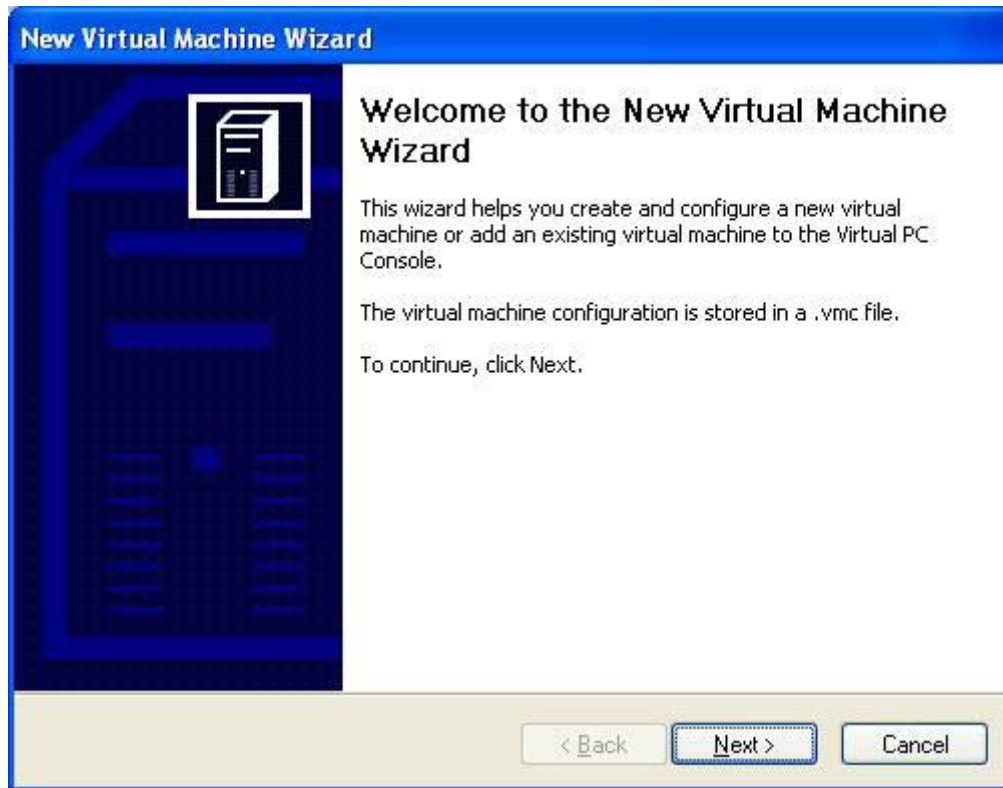


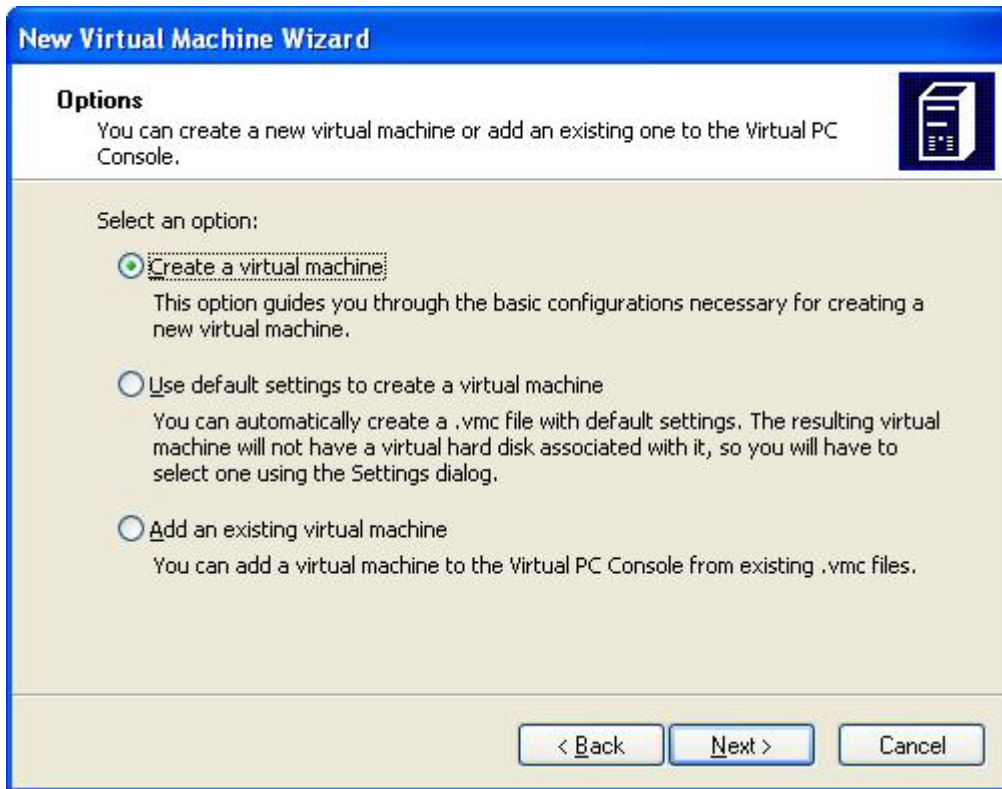
## How to Create a new Virtual Machine in Microsoft Virtual PC

Creating a new Virtual Machine is the first part in the process of running a Virtual Computer in Microsoft Virtual PC. The second part is the actual installation of the Guest Operating System within the new Virtual Machine. This tutorial walks you through the steps to create a new Virtual Machine in Microsoft Virtual PC.



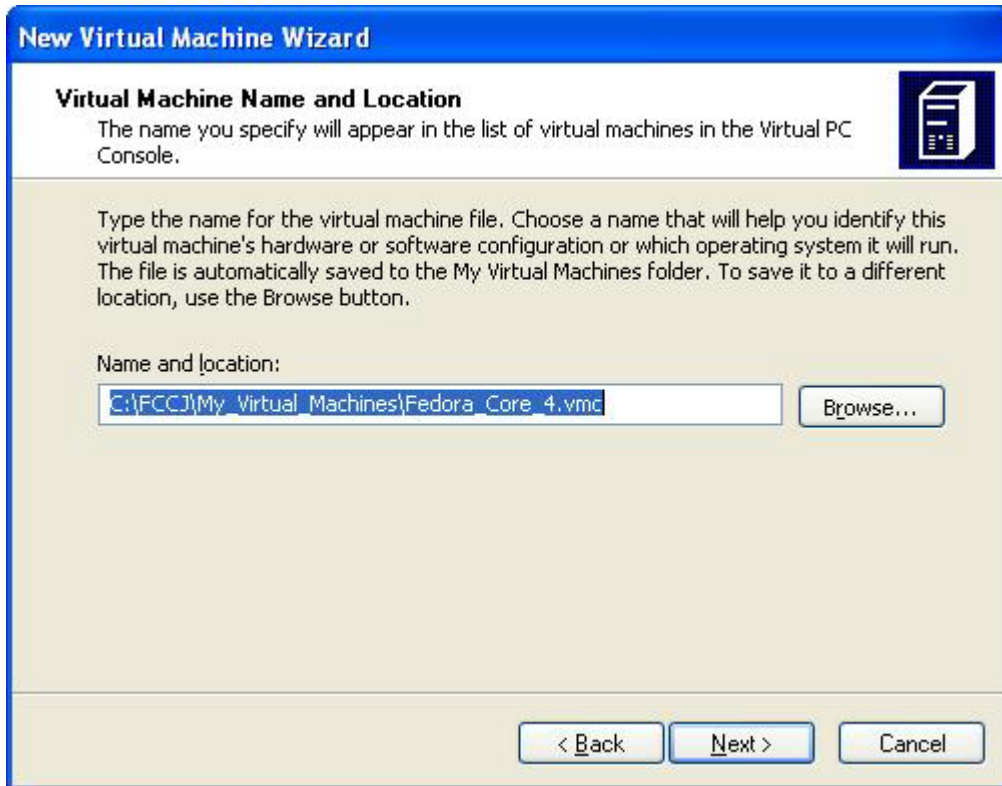
When you start Virtual PC for the first time, or when you select “New Virtual Machine Wizard” from the File drop down menu, you will be presented with the Welcome screen shown here. Just click Next.

## How to Create a New Virtual Machine in Microsoft Virtual PC



You will be presented with an Options screen, with the “Create a virtual machine” radio button pre-selected. If this is your first Virtual Machine, then you must chose “Create a virtual machine”.

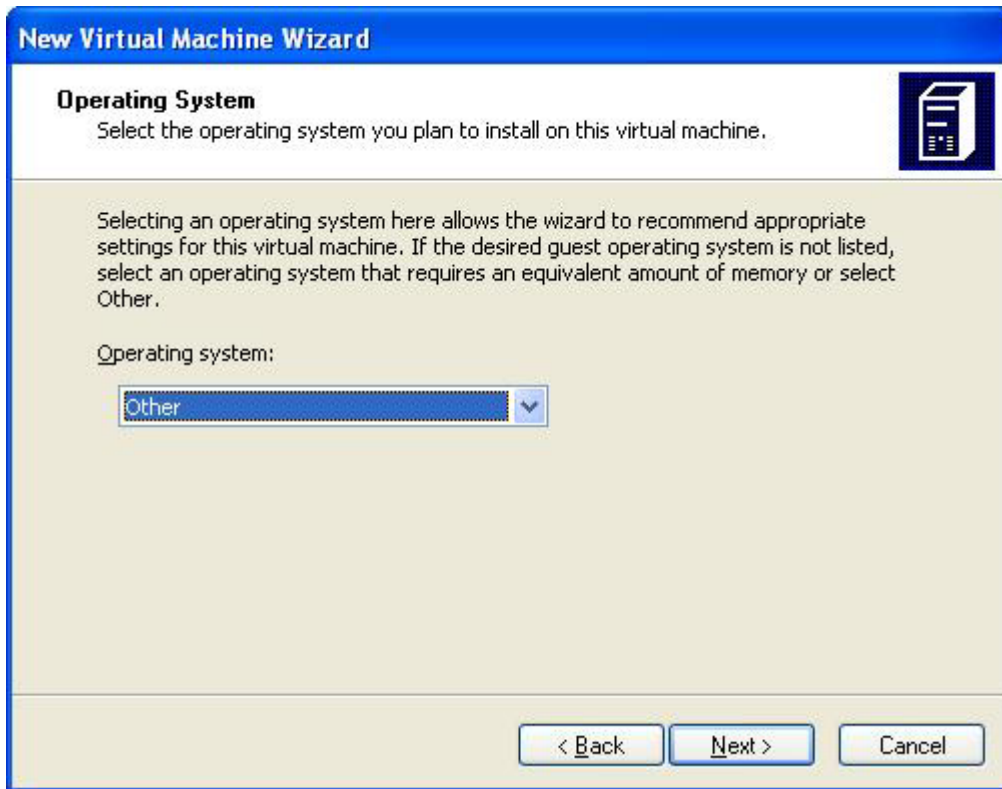
## How to Create a New Virtual Machine in Microsoft Virtual PC



You will select the Virtual Machine Name and Location. The location will default to My\_Virtual\_Machines within your my Documents folder. Where you install your Virtual Machine is up to you. The Virtual Machine in this example is being installed in C:\FCCJ\My\_Virtual\_Machines.

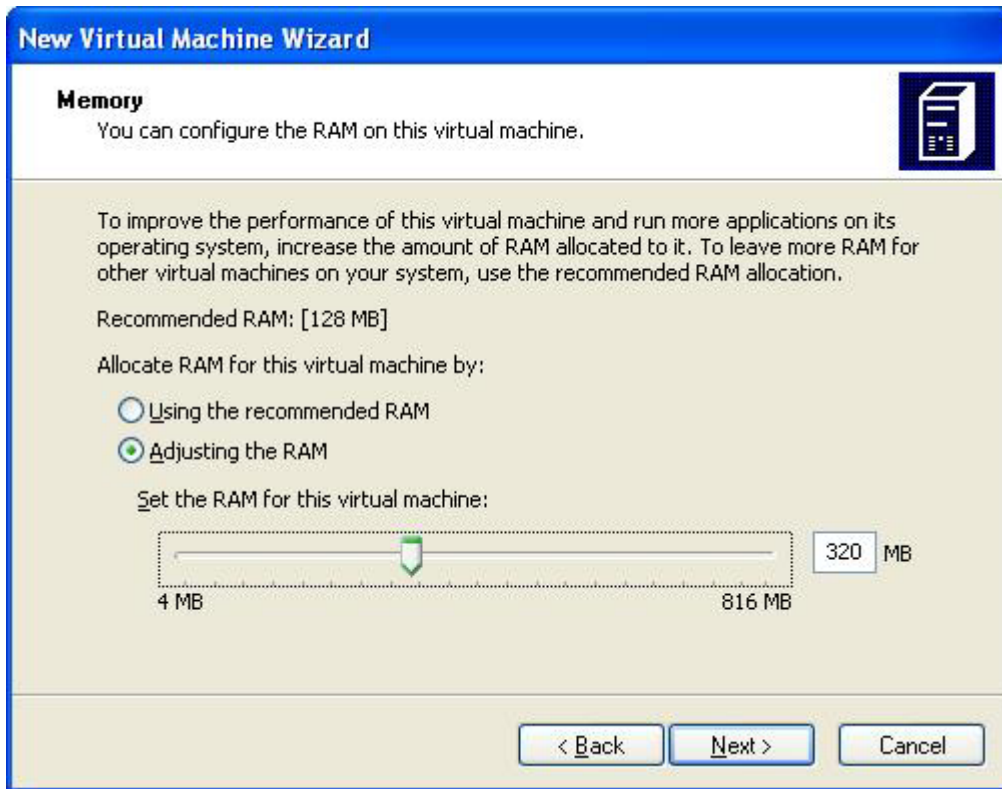
The name of the Virtual Machine is also up to you. In this example, the Virtual Machine name is Fedora\_Core\_4.vmc. Do not change the “.vmc” filename extension.

## How to Create a New Virtual Machine in Microsoft Virtual PC



You will have to select the type of Operating System that the new Virtual Machine will run. The default is MS-DOS. You will select Other.

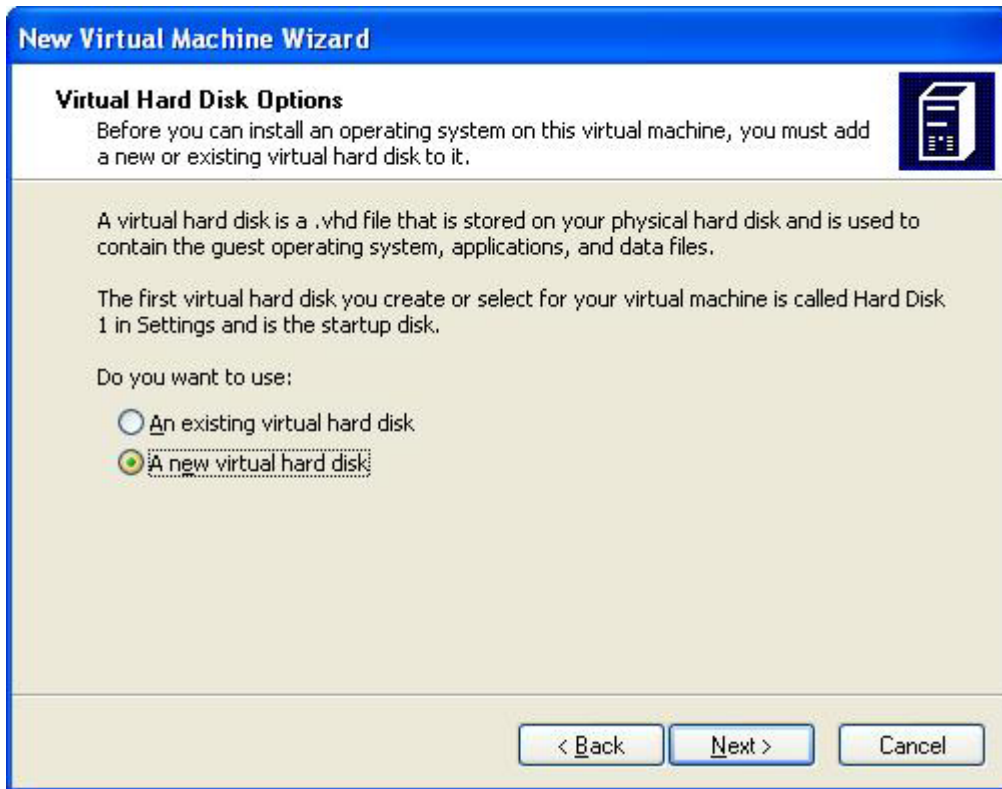
## How to Create a New Virtual Machine in Microsoft Virtual PC



You will select the amount of Memory that your Virtual Machine will consume. The default is (usually) 128 MB. The upper limit of memory (816 MB in this example) will vary depending on the real memory that is installed on your computer. This setting may require further adjustment depending on the amount of real memory that is installed on your computer. In this example, 320 MB of memory is initially being set for this Virtual Machine.

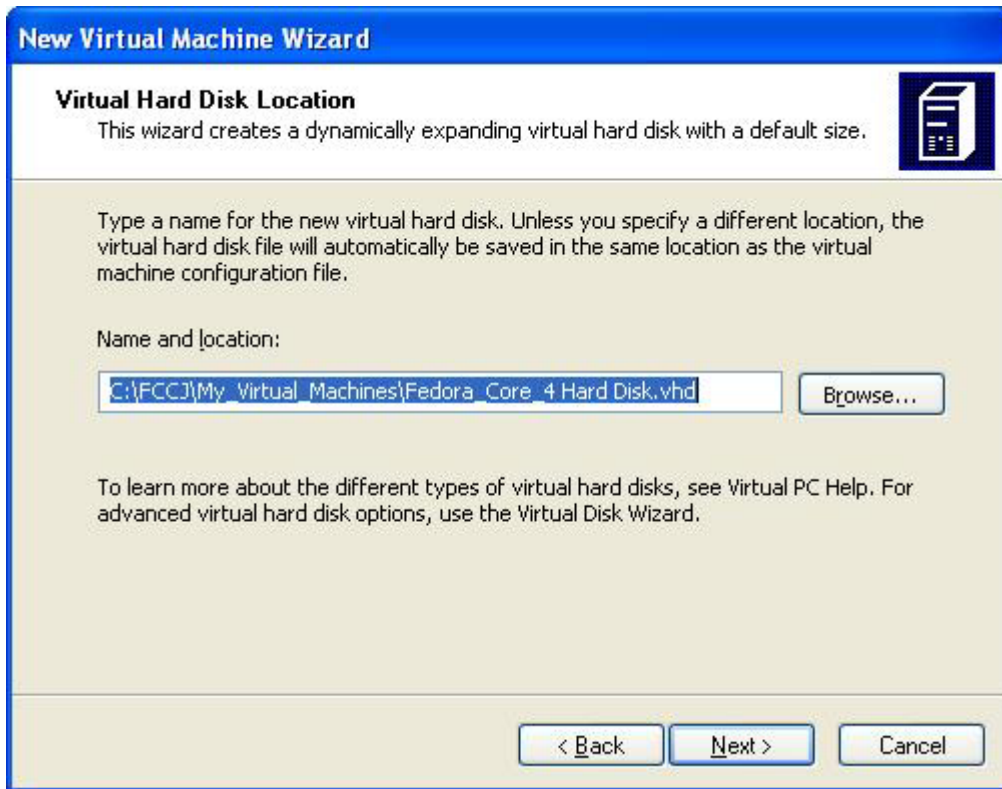
Regardless of what value you select here, you may need to further adjust the Memory after the Virtual Machine is installed.

## How to Create a New Virtual Machine in Microsoft Virtual PC



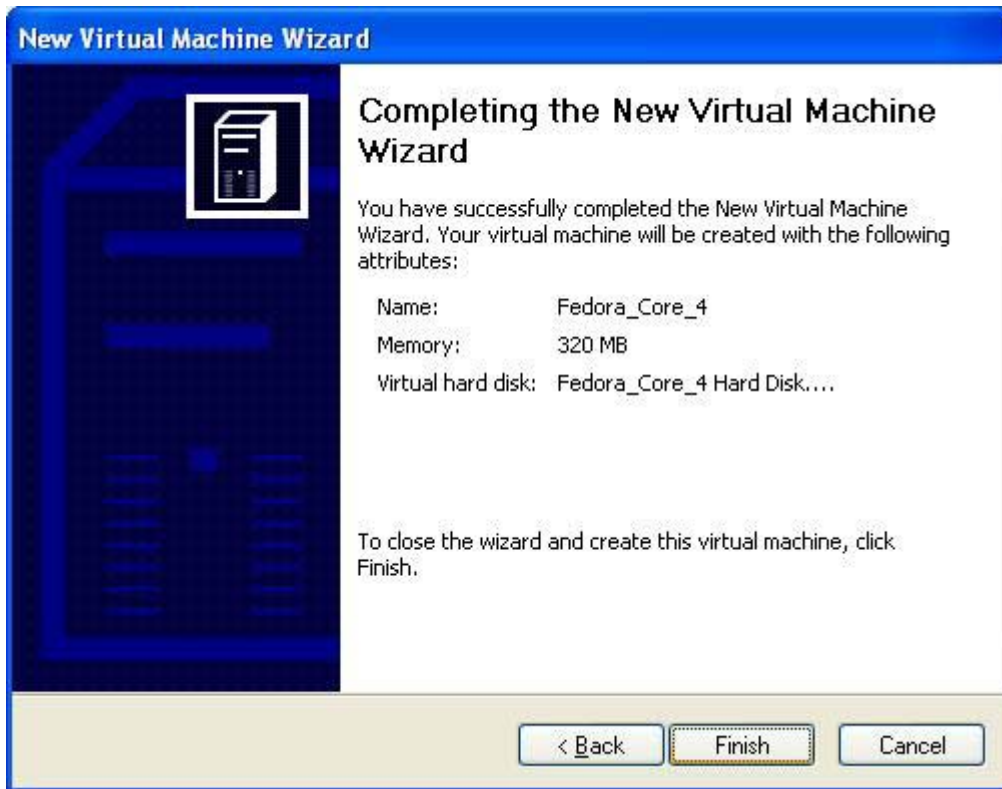
You will have to choose whether you want to use an existing virtual hard disk or a new virtual hard disk for your Virtual Machine. If this is your first Virtual Machine that you are creating, you must select a new virtual hard disk.

## How to Create a New Virtual Machine in Microsoft Virtual PC



You must select your new Virtual Hard Disk Location. By default, the Wizard will offer to create a Virtual Hard Disk in the same folder that you selected when you created your Virtual Machine location. Regardless of where you install your Virtual Hard Disk, do not change the “.vhd” filename extension.

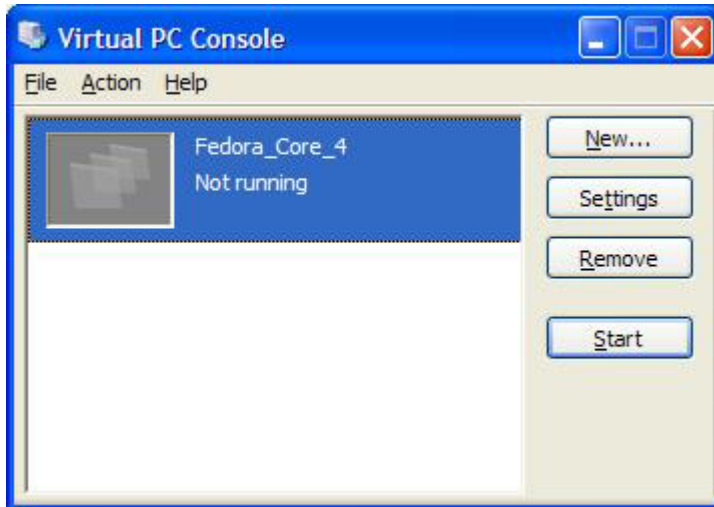
## How to Create a New Virtual Machine in Microsoft Virtual PC



You will then see the Completing the New Virtual Machine Wizard screen, at which point you can just Finish the wizard.

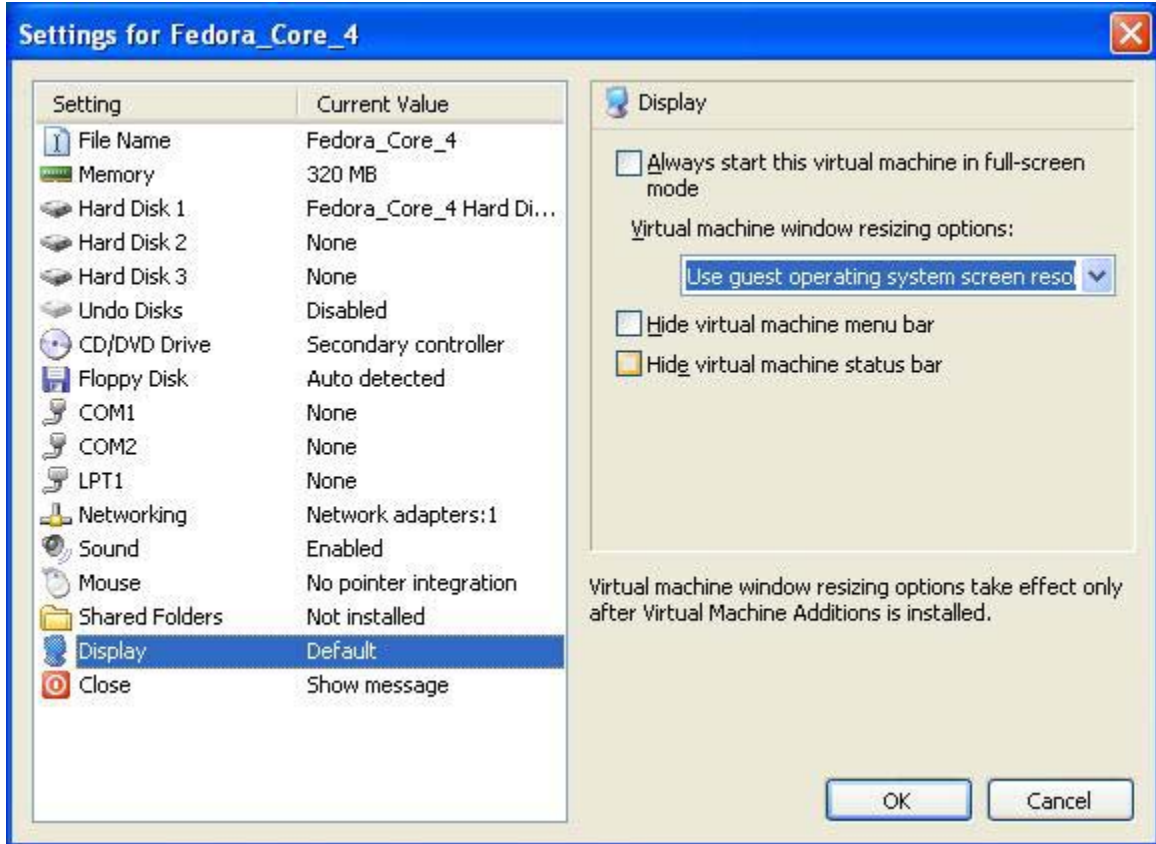
## How to Create a New Virtual Machine in Microsoft Virtual PC

Now that you have created your new Virtual Machine, you still have a few more screens within your Virtual Machine that must be configured. Locate the Microsoft Virtual PC icon within your All Programs menu, and start Microsoft Virtual PC. You be presented with the Virtual PC Console.



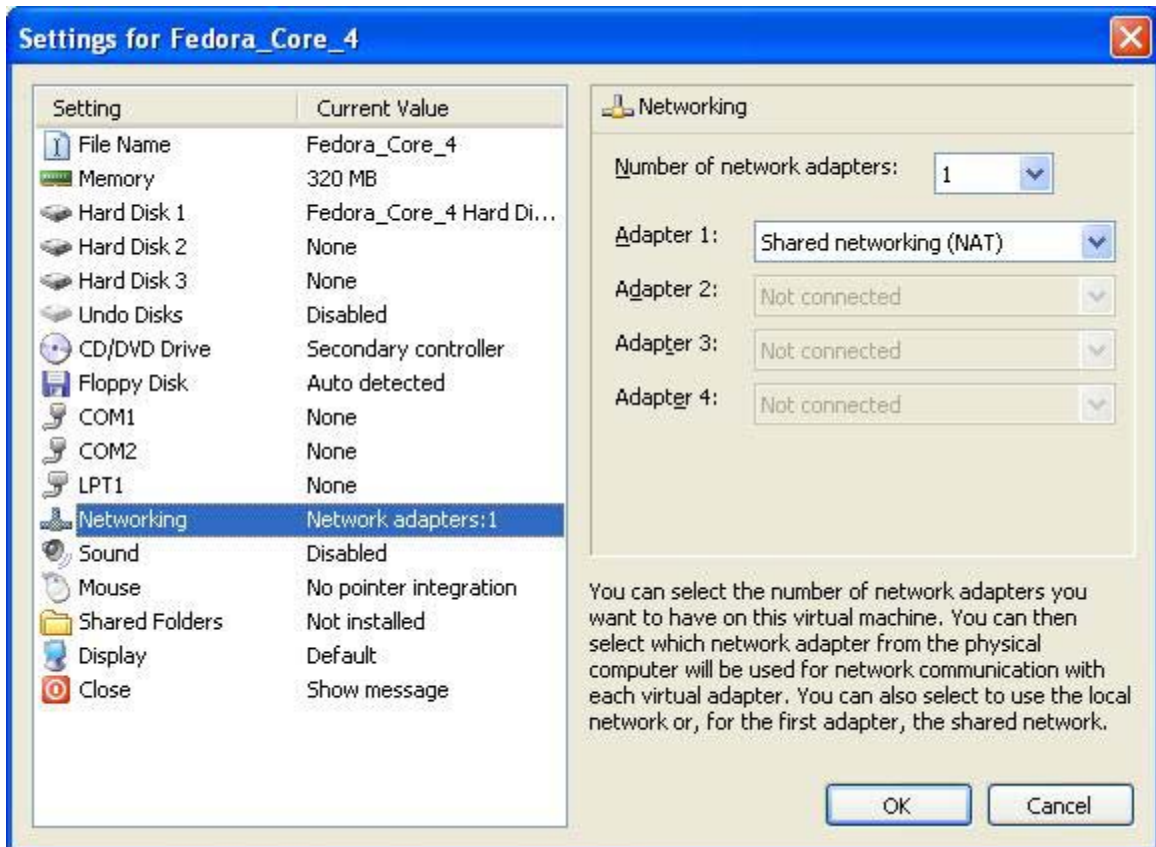
Click the Settings button, and begin the configuration or the remaining Settings.

## How to Create a New Virtual Machine in Microsoft Virtual PC



Start by selecting the Display setting. Here, “Use guest operating system screen resolution” has been selected. You may have to adjust this setting to achieve satisfactory performance.

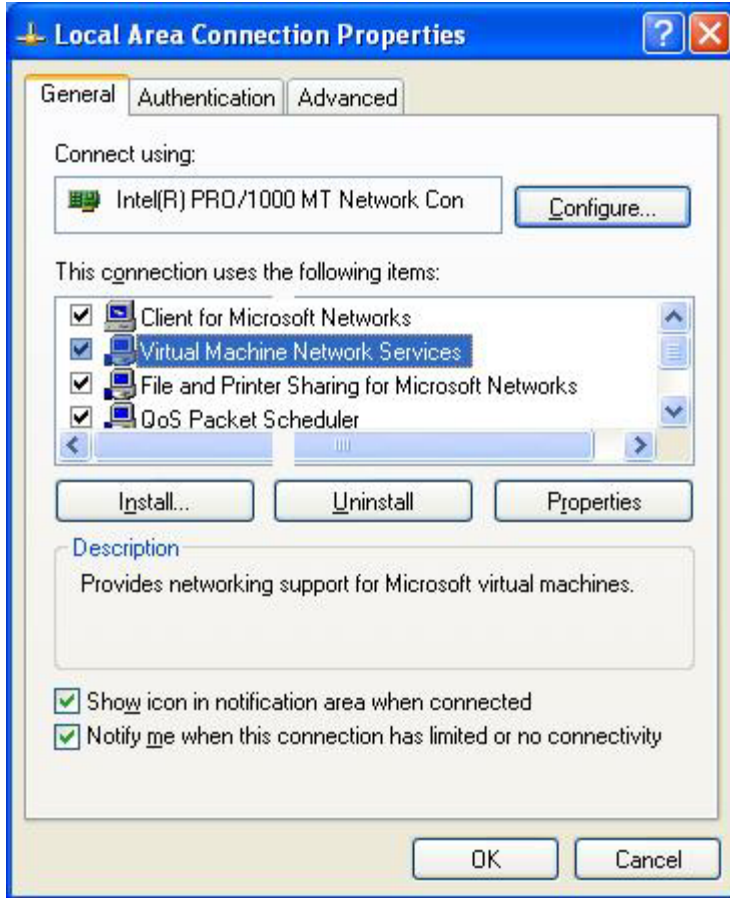
## How to Create a New Virtual Machine in Microsoft Virtual PC



You must configure the Networking. Here, “Shared networking (NAT)” has been selected. This is probably what you want. This will allow your new Virtual Machine to act as an internal DHCP client within your real Windows XP host operating system.

Other options will allow you to set a static IP for your new Virtual Machine. If you use a static IP, it must be different than the IP that is assigned to your guest Windows XP operating system.

## How to Create a New Virtual Machine in Microsoft Virtual PC



Last, check the Windows XP Local Area Connection Properties. You should see a new Connection for the Virtual Machine Network Services. Make sure that it is checked.

That's It! At this point, your new Virtual Machine is created, and it is ready for you to install the Guest Operating System!